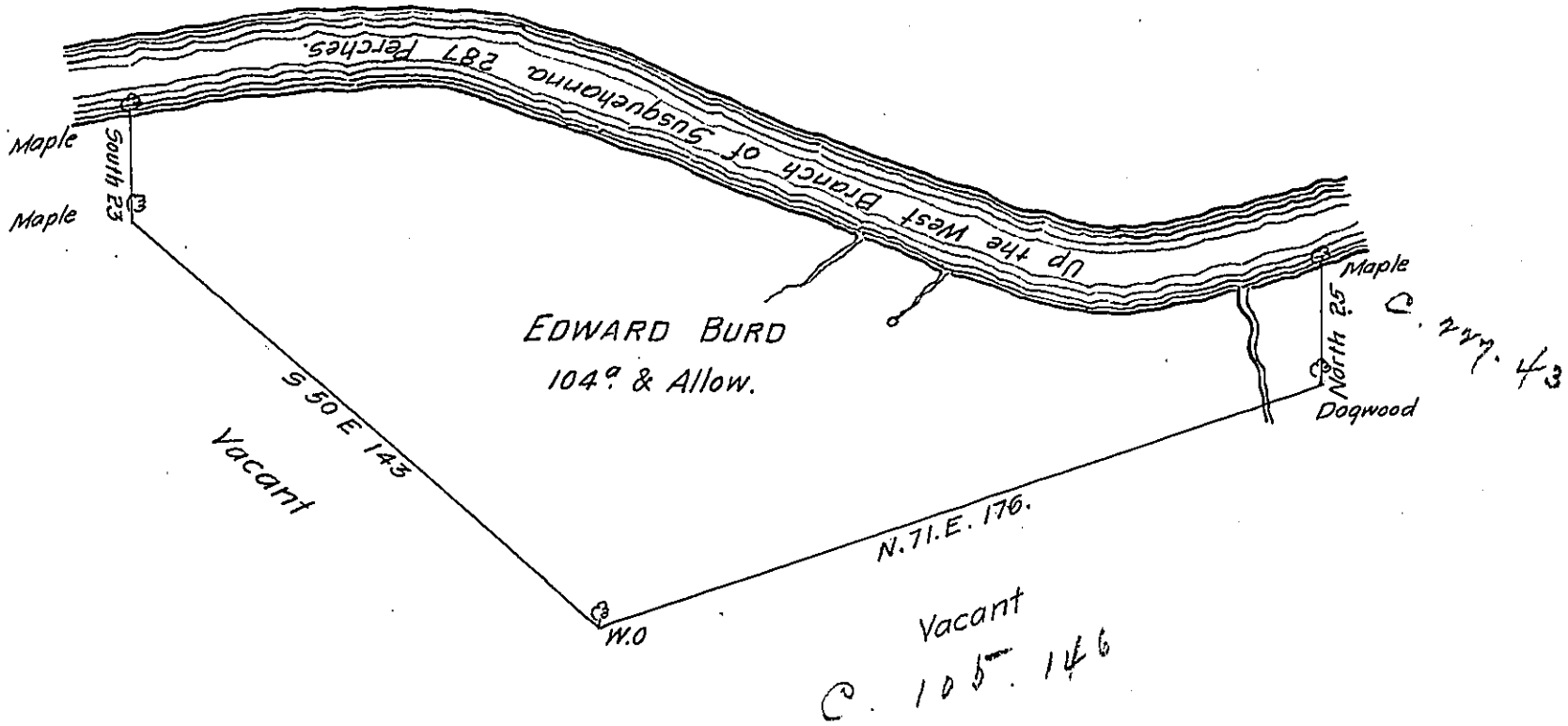


(same as page 96) 5



A Draught of a Tract of Land Called _____ Situate on the South side
of the west Branch of Susquehanna about 5 or 6 Miles above the great Island, in the
County of Northumberland, Survey'd on the 10th day of July 1785 for Edward Burd
by Virtue of his Warrant bearing date the 13th day of June 1774, Containing One
Hundred and four Acres with the Allowance of Six P. Cent for Roads &c.

Jo. J. Wallis D.S.

To John Lukens Esq.

Surveyor Genl.

IN TESTIMONY that the above is a copy of the original remaining on file in
the Department of Internal Affairs of Pennsylvania, made
conformably to an Act of Assembly approved the 16th day of
February, 1833, I have hereunto set my Hand and caused
the Seal of said Department to be affixed at Harrisburg,
this fourth day of April 1904.

Loose P. Brown
Secretary of Internal Affairs.